

INTERIOR RENOVATIONS

OF THE GALLAHER BRANCH LIBRARY PHASE 2

368 NORWAY AVENUE
HUNTINGTON, WV 25705



PROJECT LOCATION



VICINITY MAP

PROJECT LOCATION

GENERAL ABBREVIATIONS

A	ABOVE FRESH FLOOR	ABOVE	AF
B	BASE PLATE	BP	
C	CABINET	CB	
D	DAMP-PROOFING	DP	
E	EACHWAY	EA	
F	FRESH FINISH	FF	
G	GLASS	GL	
H	HOLLOW METAL	HM	
I	INTERIOR	INT	
J	JACKET	JA	
K	KITCHEN	KA	
L	LEAD	LD	
M	MAINTENANCE	MAINT	
N	NON-FIRE RATED	NFR	
O	OPENING	OP	
P	PAINT	PT	
Q	QUARTER	QT	
R	ROUGH	RU	
S	SCHEDULE	SCH	
T	TILE	TL	
U	UPPER	UP	
V	VENTILATION	VENT	
W	WATER	W	
X	X-RAY	XR	
Y	YIELD	Y	
Z	ZONING	Z	



ISSUED FOR CONSTRUCTION
DATE: MARCH 30, 2023

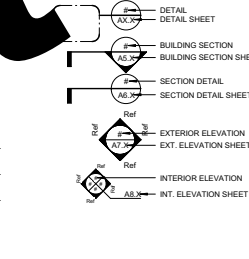
NOTES

1. All work shall be in accordance with the Contract Documents as defined in Article 1 of the General Contract Documents.
2. The Contractor shall be responsible for locating all existing utilities (water, gas, electric, sewer, etc.) before construction.
3. The Contractor shall maintain the site for the protection of existing utilities.
4. Existing elevations and locations to be joined shall be as shown on drawings.
5. The Contractor shall maintain the site for the protection of existing utilities.
6. The Contractor shall maintain the site for the protection of existing utilities.

MATERIAL DESIGNATIONS

	CONCRETE
	BRICK
	STEEL
	ALUMINUM
	PLYWOOD
	ROUGH WOOD
	BATT INSULATION

SECTION DESIGNATIONS



INDEX OF DRAWINGS

LOCAL	GENERAL PLAN
ELEVATION	INTERIOR FLOOR PLAN
SECTION	SECTION DETAIL
DETAIL	SECTION DETAIL SHEET

DESIGN TEAM



FOR Viewing Purposes Only Not to Scale

INTERIOR RENOVATIONS OF THE

GALLAHER BRANCH LIBRARY

368 NORWAY AVENUE HUNTINGTON, WV 25705

CABELL COUNTY PUBLIC LIBRARY

455 NINTH AVENUE PLAZA HUNTINGTON, WV 25701

Edward Tucker ARCHITECTS, INC. ARCHITECTS & INTERIORS



© 2018 Edward Tucker Architects, Inc.

SHEET REVISIONS

DATE DESCRIPTION



1/30/23

ISSUED FOR CONSTRUCTION

1ST FLOOR FINISH PLAN

A2.1

ETA PROJECT #: 2022-0915

DATE: JANUARY 30, 2023

KEYNOTE LEGEND - FINISH

1	AWF ON LOW WALL (WHERE RAILING OCCURS); SEE DETAIL FOR TERMINATION/EDGE AT TOP OF WALL. SEE PLAN FOR LOCATIONS.
2	COORDINATE CARPET TILE INSTALLATION W/NEW CARPET RACEWAY INSTALLATION
3	START COVERING TO BE CPT 2, TREADS & RISERS W/RESILIENT NOOSING. SEE SECTION 09 65 00.

FINISH SCHEDULE

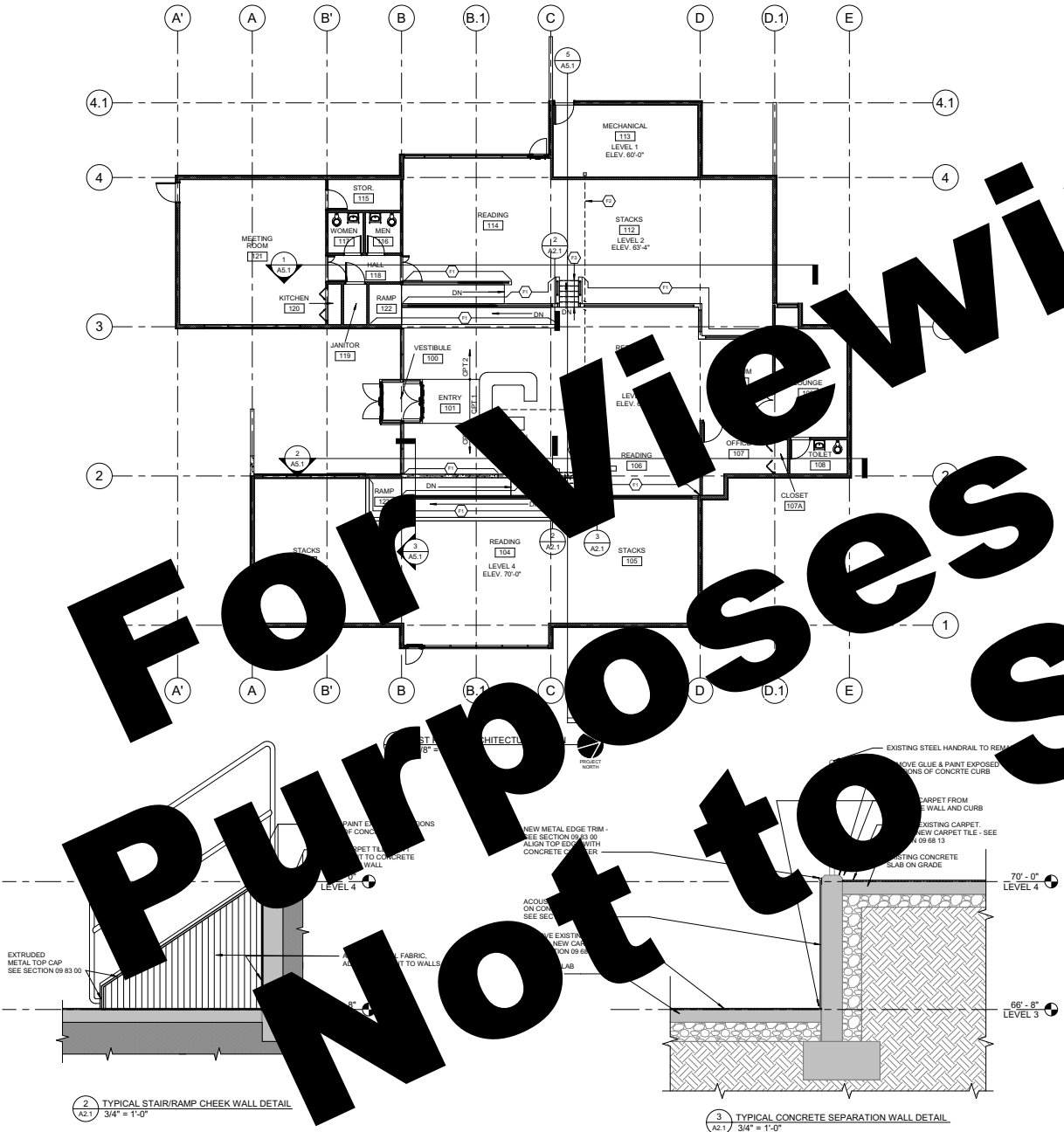
ROOM #	ROOM NAME	WALL	CEILING	COMMENTS
100	VESTIBULE	EX	EX	
101	ENR	EX	EX	
102	CIRCULAR	PT2	EXAWF	EX
103	STACK	PT2	EX	EX
104	READING	PT2	EX	EX
105	STACK	EX	EX	EX
106	MECHANICAL	EX	EX	EX
107	READING	EX	EX	EX
108	MECHANICAL	EX	EX	EX
109	HALL	EX	EX	EX
110	PERCE	EX	EX	EX
111	STACK	EX	EX	EX
112	MECHANICAL	EX	EX	EX
113	MECHANICAL	EX	EX	EX
114	READING	PT2	RB	EXAWF
115	STOR	PT2	RB	EX
116	MEAN	EX	EX	EX
117	WOMEN	EX	EX	EX
118	HALL	PT2	RB	EX
119	HALL	EX	EX	EX
120	JANITOR	PT2	EX	EX
121	MEETING ROOM	PT2	EX	EX
122	RAMP	PT2	EX	EX
123	MECHANICAL	EX	EX	EX
124	HALL	EX	EX	EX
125	HALL	EX	EX	EX
126	HALL	EX	EX	EX
127	HALL	EX	EX	EX
128	HALL	EX	EX	EX
129	HALL	EX	EX	EX
130	HALL	EX	EX	EX
131	HALL	EX	EX	EX
132	HALL	EX	EX	EX
133	HALL	EX	EX	EX
134	HALL	EX	EX	EX
135	HALL	EX	EX	EX
136	HALL	EX	EX	EX
137	HALL	EX	EX	EX
138	HALL	EX	EX	EX
139	HALL	EX	EX	EX
140	HALL	EX	EX	EX
141	HALL	EX	EX	EX
142	HALL	EX	EX	EX
143	HALL	EX	EX	EX
144	HALL	EX	EX	EX
145	HALL	EX	EX	EX
146	HALL	EX	EX	EX
147	HALL	EX	EX	EX
148	HALL	EX	EX	EX
149	HALL	EX	EX	EX
150	HALL	EX	EX	EX

FINISH GENERAL NOTES

- EXISTING BROWN CARPET FROM AREAS THAT ARE TO RECEIVE NEW CARPET. PREP FLOOR CARPET TILE.
- CARPET FROM CONCRETE RAMPS, WALLS & CURBS. PREP FOR NEW ACOUSTICAL PORTION OF CURBS. SEE DETAIL.
- INSTALL QUARTER TURN PATTERN.
- 12" X 36" CARPET TILE - INSTALL BRICK ASHLAR PATTERN.

FINISH LEGEND

CODE	DESCRIPTION	REMARKS
CPT 1	CARPET TILE (STEP IN STAIRS) - SEE SECTION 09 65 00	Material furnished by Mohawk by owner - contract GS-03F-077AA
CPT 2	CARPET TILE (RAMP) - SEE SECTION 09 65 00	Level and prepare floor in accordance with manufacturer recommendations. See Finish Plan for install locations.
AWF	ACOUSTICAL WALL FABRIC - SEE SECTION 09 65 00	
PT 1	PAINT - SATIN GLOSS - SEE SECTION 09 91 23	



2 TYPICAL STAIR/RAMP CHEEK WALL DETAIL
A2.1 3/4" = 1'-0"

3 TYPICAL CONCRETE SEPARATION WALL DETAIL
A2.1 3/4" = 1'-0"

For viewing purposes only

INTERIOR RENOVATIONS

OF THE
GALLAHER
BRANCH
LIBRARY

368 NORWAY AVENUE
HUNTINGTON, WV 25705

CABELL
COUNTY
PUBLIC
LIBRARY

455 NINTH AVENUE PLAZA
HUNTINGTON, WV 25701



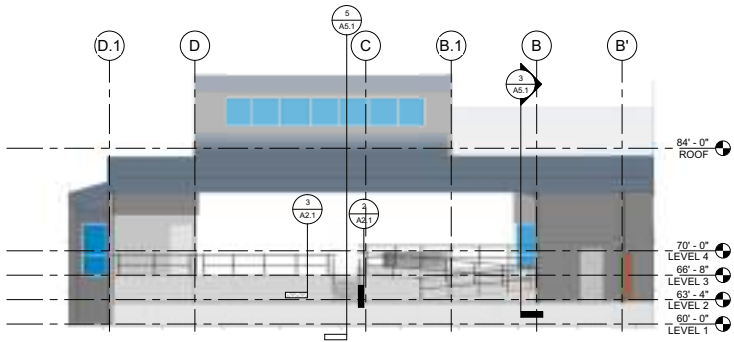
SHEET REVISIONS		
#	DATE	DESCRIPTION



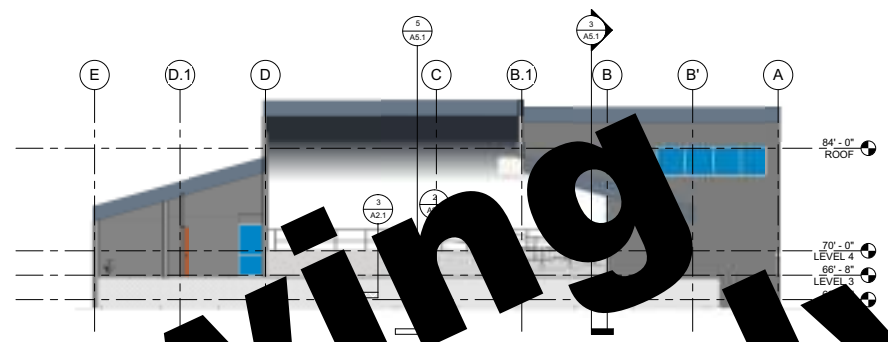
ISSUED FOR CONSTRUCTION

BUILDING SECTIONS
A5.1

ETA PROJECT #: 2022-0915
DATE: JANUARY 30, 2023



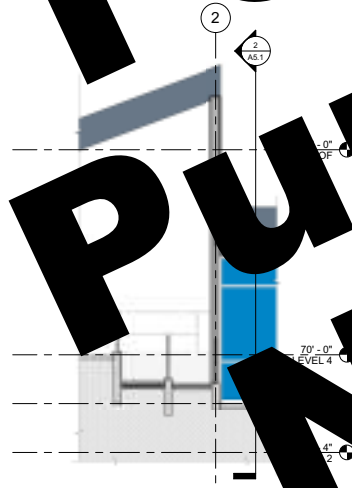
1 LEVEL 2 SECTION
A5.1 1/8" = 1'-0"



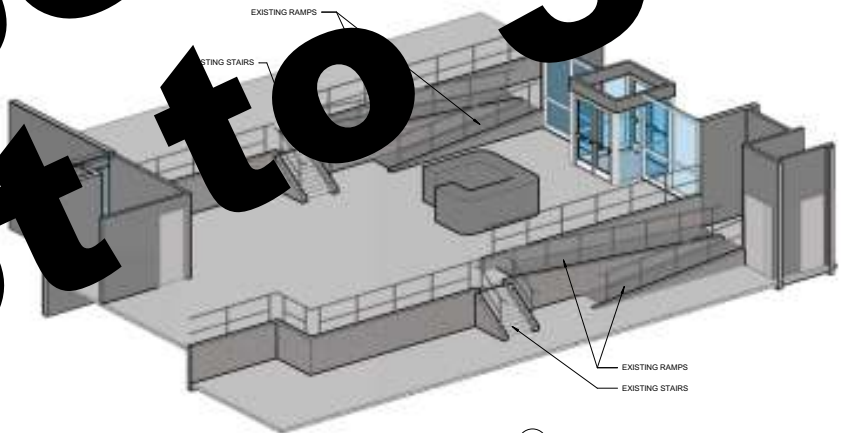
2 LEVEL 3 SECTION
A5.1 1/8" = 1'-0"



SECTION THRU STAIRS
A5.1 1/8" = 1'-0"



3 LEVEL 3/4 RAMP CROSS SECTION
A5.1 1/4" = 1'-0"



4 3D VIEW OF RAMPS & STAIRS
A5.1 1/4" = 1'-0"

For Viewing Only
Purposes Only
Not to Scale

INTERIOR
RENOVATIONS

OF THE

GALLAHER
BRANCH
LIBRARY

368 NORWAY AVENUE
HUNTINGTON, WV 25705

CABELL
COUNTY
PUBLIC
LIBRARY

455 NINTH AVENUE PLAZA
HUNTINGTON, WV 25701

**Edward Tucker
ARCHITECTS, INC.**



© 2018 Edward Tucker Architects, Inc.

SHEET REVISIONS

#	DATE	DESCRIPTION
---	------	-------------



1/30/23

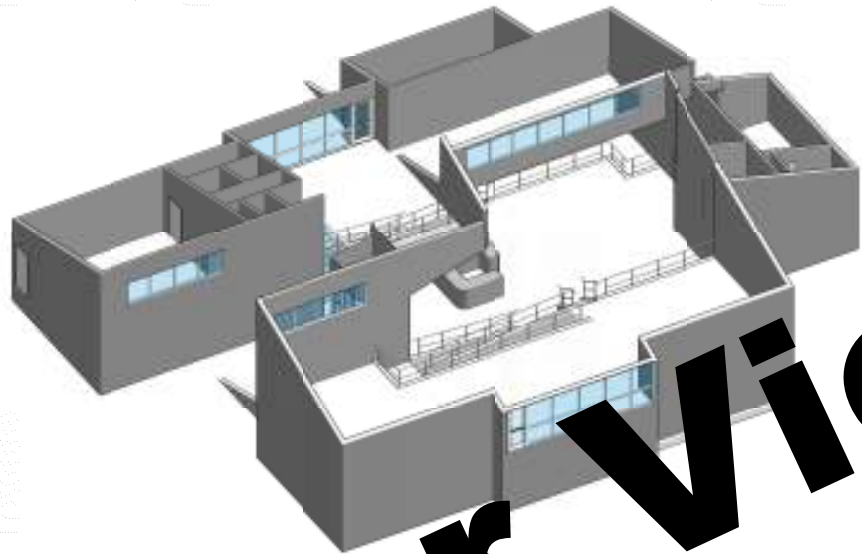
ISSUED FOR
CONSTRUCTION

AXON VIEWS

A13.1

ETA PROJECT #: 2022-0915

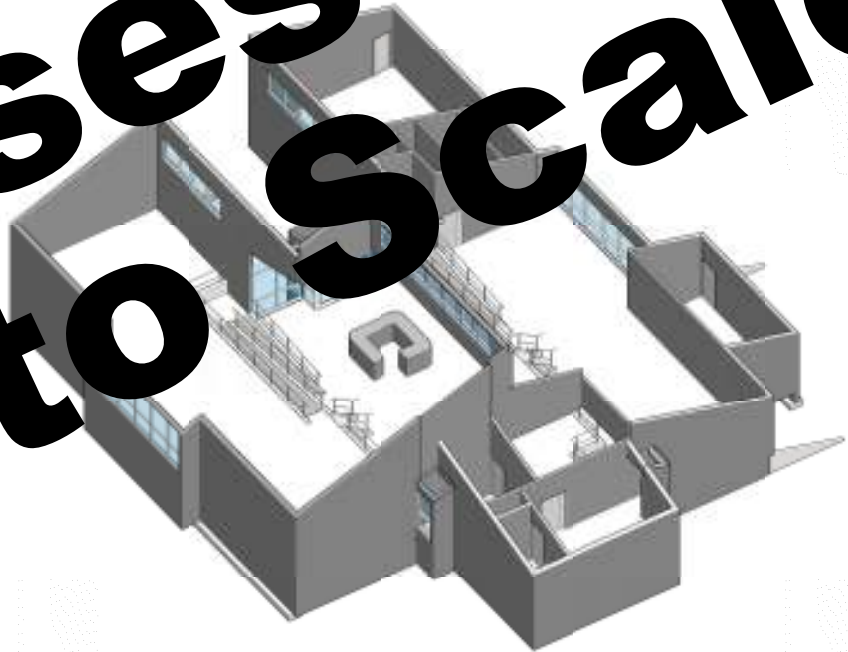
DATE: JANUARY 30, 2023



AXON VIEW - LOOKING NORTHWEST



AXON VIEW ROOF



AXON VIEW - LOOKING SOUTHWEST

**For Viewing
Purposes Only
Not to Scale**

PLAN NOTES:

- ① REPLACE EXISTING LIGHT AT EXISTING LOCATION. EXISTING CIRCUITS AND SWITCHES TO REMAIN.
- ② EXISTING LIGHT TO REMAIN.
- ③ EXISTING TRACK LIGHTING TO BE REPLACED AT EXISTING LOCATION. EXISTING CIRCUITS AND SWITCHES TO REMAIN. TRACK IS ON SLOPPED SURFACES PROVIDE TRACK HEADS THAT LOCK TO TRACK
- ④ CIRCUIT NEW RECEPTACLES TO 1P/20A BREAKER IN EXISTING PANEL.
- ⑤ OVER THE DOOR RACEWAY FOR POWER AND COMMUNICATIONS TO EXISTING RECEPTION DESK.



LIGHTING FIXTURE SCHEDULE

MARK	LAMP/TYPE	MOUNTING	MANUFACTURER	MODEL	DESCRIPTION	VOLTS
C1	LED	SURFACE	LUMENWERK	W52H4DR750	LINEAR PENDANT 8" LONG DIRECT, FLUSH LENS FINISH BY ARCH. EXTRUDED COORDINATE MOUNTING HOUSING ON STACKS	120 VOLT
C2	LED	SURFACE	LUMENWERK	W52H4DR750	LINEAR PENDANT 8" LONG DIRECT, FLUSH LENS FINISH BY ARCH. EXTRUDED COORDINATE MOUNTING HOUSING ON STACKS	120 VOLT
C3	LED	PENDANT	DAYRITE	CP2K23200LM	2'x2' LED FLAT PANEL SATIN WHITE LENS 1 - ELECTRONIC DRIVER	120 VOLT
C4	LED	RECESSED	COOPER	43LSTP404	LED STRIP	120 VOLT
B	LED	COOPER	618WHU	EXIT LIGHT REMOTE EGRESS LIGHT		120 VOLT
E	LED	DAY-BRITE	CP2K23200LM	2'x2' LED FLAT PANEL SATIN WHITE LENS 1 - ELECTRONIC DRIVER		120 VOLT
F	LED	RECESSED	COOPER	43LSTP404	LED STRIP	120 VOLT
G	LED	WALL	LITHONIA	ELAQ	WET LOCATION RATED	120 VOLT
H	LED	SURF/PEND	COOPER	43LSTP404	LED STRIP	120 VOLT
N	LED	WALL	COOPER	43LSTP404	LED STRIP	120 VOLT
T1	LED	TRACK	DAYRITE	CP2K23200LM	2'x2' LED FLAT PANEL SATIN WHITE LENS 1 - ELECTRONIC DRIVER	120 VOLT
M	LED	RECESSED	COOPER	43LSTP404	LED STRIP	120 VOLT
R1	LED	RECESSED	COOPER	43LSTP404	LED STRIP	120 VOLT

GENERAL NOTES PERTAINING TO ALL LIGHTING FIXTURES:

- DIRECTIONAL INDICATOR ON LIGHTING FIXTURES SHALL COMPLY WITH NFPA SECTION 5-10.4.1.2.
- VERIFY VOLTAGE TO OPERATE WITH ELECTRICAL DRAWINGS.
- LIGHTING FIXTURES SHALL COMPLY COMPLETE WITH NECESSARY MOUNTING HARDWARE AND ACCESSORIES.
- ANY REQUEST FOR SUBSTITUTION TO THE LIGHTING FIXTURE SCHEDULE SHALL BE SUBMITTED IN WRITING TO THE ARCHITECT AND ENGINEER. ANY PERSON REQUESTING HIGHER QUALITY AS DETERMINED BY ENGINEER, ANY PERSON REQUESTS MUST SUBMIT IN BOUND FORM A COLLECTION OF MANUFACTURERS CUT SHEETS BY ENGINEER. A MINIMUM OF FOUR (4) CUT SHEETS FROM TWO (2) MANUFACTURERS SHALL BE REFLECTED IN AN ADDENDUM.
- SUPPLY HANGING BAR KITS WITH ALL RECESSED DOWN LIGHTS.
- EMERGENCY BATTERY PACK FOR LED LIGHT FIXTURES SHALL BE RATED TO A MINIMUM OF FIVE (5) HOURS.
- INTERIOR FIXTURES LIGHTING TEMPERATURE SHALL BE 3000K

For Viewing Only
 Not to Scale

Edward Tucker ARCHITECTS, INC.
 1000 1st Street, Huntington, WV 25701
 304.536.1111
 www.edwardtuckerarchitects.com

SHEET REVISIONS
 # DATE DESCRIPTION

ISSUED FOR CONSTRUCTION

LIGHTING/ELECTRICAL PLAN

ETA PROJECT #:
 DATE: JANUARY 30, 2023

